



TArc TAYLOR ARCHITECTS

ARCHITECTURE
ENGINEERING
PROGRAMMING
PLANNING
SUSTAINABILITY

HONORS

TAYLOR ARCHITECTS will be featured in an upcoming issue of **Architectural Leaders Today** magazine. Architectural Leaders Today is a trade publication to the design and construction industry that features innovative and respected firms whose contributions to the built environment make them leaders in the field of Architecture.

The article will discuss the firm's design philosophy, its approach to sustainable design and showcase several of the firm's recent projects.

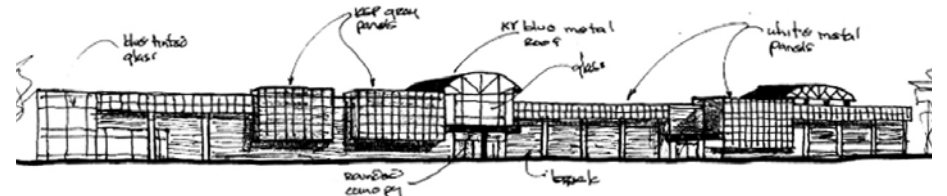
More will be forthcoming when the publication date is set.

SKETCHING - THE LOST ART?

Long before the beginning of construction the concept of a building begins with an idea. Traditionally the Architect has documented, refined and nurtured these ideas in the form of conceptual sketches. Many times these sketches are hardly recognizable to anyone but the Architect. Other times they are refined works of art. While the advent of computer drafting has been a tremendous tool to the Architect, has it made sketching a lost art? Most new Architects learn to design on the computer and no longer are accustomed to taking pen to paper. But does the harsh formality of the computer take away from the quality of the design? Even buildings by Architects like Frank Gehry, which could not be built without the aid of computers, begin with sketches of an idea.

Buildings can be designed in various ways: sometimes from the inside out or sometimes from the outside in. The design method also defines the type of sketch. Complex buildings are usually designed from the inside out. Design the functional spaces, and then make the exterior form fit the plan.

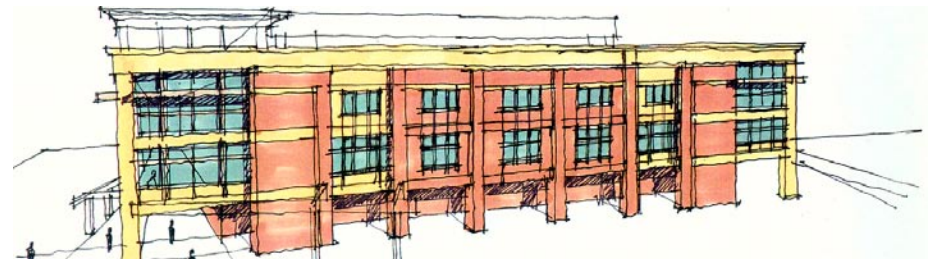
Below is an example, the Kentucky State Police Information Service Center. The complex arrangement of spaces was completed first so the first exterior sketch is very defined and resembles the finished design shown above right.



Another example is designing an exterior to fit a concept, and then making the interior work. Such was the expansion and renovation of the WKU Downing University Center. Here a concept to upgrade the exterior was primary to designing the interior renovation. Again, compare the sketch to the finished product below left.



Sketches can also be utilized to convey concepts to clients. These drawings are usually more refined and generally rendered in color. They still leave the impression that the drawing is an idea, not a finished product like conceptual drawings prepared on a computer. The client is not hesitant to critique or ask for revisions.



CONTACT INFORMATION

836 E. Euclid Avenue, Suite 320
Lexington, Kentucky 40502
859.231-6383 j.taylor@twarc.com

Visit our web site at www.twarc.com