



# TArc

## TAYLOR ARCHITECTS

ARCHITECTURE  
ENGINEERING  
PROGRAMMING  
PLANNING  
SUSTAINABILITY

### RECENTLY COMPLETED

The TArc design of the new clinic in Mason, Ohio, for Dermatologists of Southwest Ohio, was recently completed by Dan Thomas, Project Manager for Bunnell Hill Construction. The new facility contains exam rooms, procedure rooms, PUVA, MOHS laboratory, Recovery/MOHS Waiting, Physicians Offices, Business Offices, Waiting Rooms and MA Work Stations.

This state-of-the-art facility is the newest expansion of services for DSWO which has locations throughout Ohio. The interiors, also by TArc, provide a warm, comfortable setting for patients, doctors and staff. Shown below is the check-in area off the main waiting room.



### HATFIELD-McCOY TIES

With the popularity of the recent History Channel mini-series on the Hatfield - McCoy Feud, we thought you might be interested in the TArc connection to the Hatfield family. The feud lasted from 1863 to 1891 and occurred in the Tug Fork of the Big Sandy River. The Hatfields primarily lived on the West Virginia side (Logan County) and the McCoys primarily on the Kentucky side (Pike County).



In the famous picture of the Hatfield clan above, the man standing on the right side of the back row, holding a revolver, is Ock Damron. Ock worked in the lumber business with Devil Anse Hatfield and was the Great Grandfather of TArc Architect and Landscape Architect, Anthony Parsons. Ock was also the Great Grandfather of Chris Robinson, formerly a chemist and industrial hygienist for Taylor Environmental.

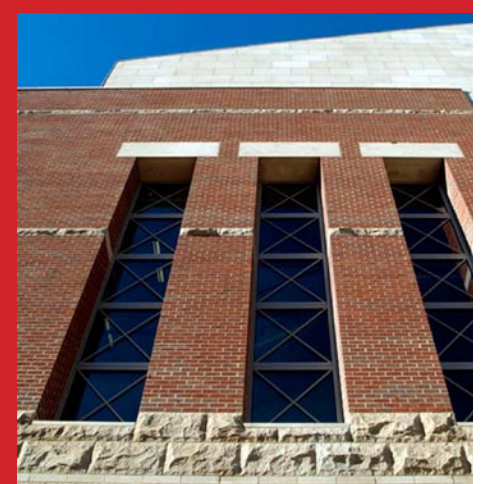
While Jerry can claim no blood relation to the Hatfields, his college housemate and long-time friend is Rodney Hatfield, a direct descendant of the feudist. Many of you may know Rodney as a world renowned artist, (aka "Art Snake"), musician (the Hatfield Clan and the Metropolitan Blues Allstars) and actor (i.e. "Next of Kin" with Patrick Swayze, Liam Neeson and Helen Hunt). Rodney was born on Blackberry Creek in Pike County, scene of skirmishes during the feud.

Many of the Hatfields fought in the 45th Virginia Infantry during the War for Southern Independence, including "Devil Anse", before he deserted and joined a guerilla unit called the "Logan Wildcats". Jerry's Great Great Grandfather, lived south of the Hatfields in Craig County, Virginia, and fought with the 64th Virginia Mounted Infantry.

While they probably didn't know one another, they fought in some of the same battles and skirmishes throughout the war in the western Virginia area.



Anthony Parsons, IA, ASLA



### CONTACT INFORMATION

836 E. Euclid Avenue, Suite 320  
Lexington, Kentucky 40502  
859.231-6383 j.taylor@twarc.com

Visit our web site at [www.twarc.com](http://www.twarc.com)

## ON THE BOARDS - THE PULASKI COUNTY SENIOR & ALZHEIMER CENTER



Currently in the Construction Document Phase, the new 10,000 square foot, \$1,900,000 Pulaski County Senior & Alzheimer Center will provide services to the ever increasing number of elderly residents in the Somerset area. The facility contains two separate, but related, entities sharing a common entrance lobby and parking.

The senior center provides both structured and unstructured activities during the day as well as serving nourishing meals. Clients have areas for music, crafts, physical fitness, card playing, television, computer literacy, educational programs or just socialization.

The senior center contains a large multi-purpose area for activities and dining, a conference room, computer/resource room, kitchen, offices, television room and an outdoor porch.

The Alzheimer Center will provide adult daycare for those suffering from various stages of Alzheimer Disease. The facility will provide many of the same functions as the Senior Center but be designed to accommodate the special needs of its clients. It will be staffed with trained professionals to satisfy the licensing requirements of the Cabinet for Health and Family Services.

The new facility will contain a large multi-purpose/dining area, kitchen, offices, a quiet room, laundry, toilet and bathing areas, and a large outdoor porch. The toilet and bathing areas will be equipped to provide hairdressing and chiropody services.

Day care is a key component of a comprehensive support service for elderly people, their caregivers and their families. The tradition of providing care on a daily basis for the elderly, the physically disabled and the mentally ill is well established and those with dementia have many of these same needs. The requirement for care is long term maintenance / monitoring of the person with dementia, and for relief of the caregivers.

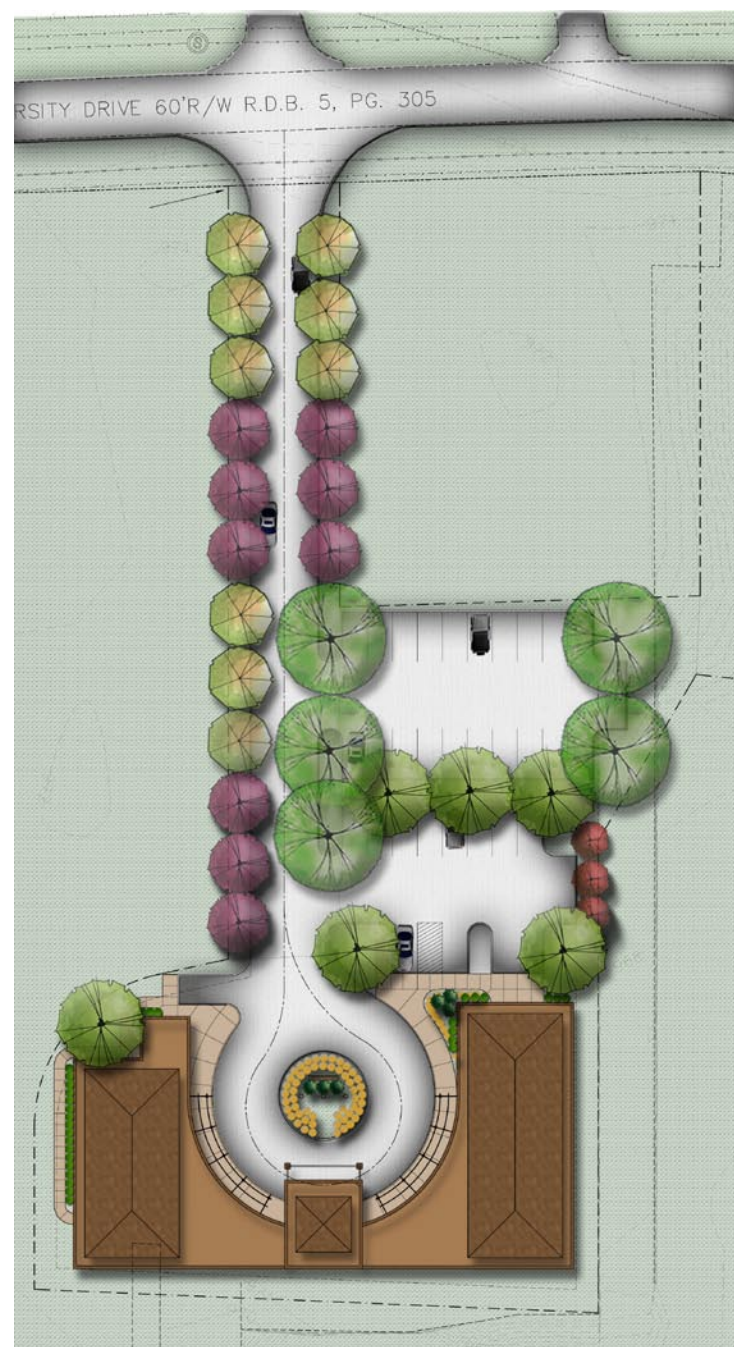
The objectives for a day care center will typically include some or all of the following:

- to reduce the stress on carers by giving them respite from the burden of caring.
- to contain the problem by enabling the carers to continue caring.
- to provide therapy for the clients with dementia in order to manage the consequences of the disease.
- to enable older people to continue living in the community.
- to support caregivers and their families.

The company of other people and the activities provided in the center may stimulate the person with dementia. Many of the activities will aim to maintain residual skills:

- Reminiscence Therapy - use of newspapers, photographs and objects from a person's youth.
- Domestic Activities - use of activities a person once did with efficiency such as cooking, gardening and painting.
- Entertainment and Hobbies - give clients the opportunity to express past talents such as music, singing, games, etc.
- Physical Exercise - People with dementia may sleep badly if they have not had sufficient exercise.
- Table Manners & Hygiene - if the center staff can help with these basic skills and support the client for as long as possible, the family will benefit.

The project is being developed for the Pulaski County Fiscal Court under the direction of Judge-Executive Barty Bullock and Community Development Director, Tiffany Bourne. Grant administration is provided by the Lake Cumberland Area Development District's Judy Keltner and Judy Hachey.



PULASKI COUNTY SENIOR/ALZHEIMER CENTER SITE PLAN

### CONTACT INFORMATION

836 E. Euclid Avenue, Suite 320  
Lexington, Kentucky 40502  
859.231-6383 j.taylor@twarc.com

Visit our web site at [www.twarc.com](http://www.twarc.com)